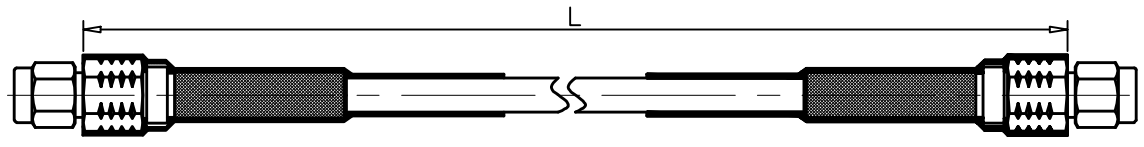


1	2	3	4	
RevNo	Revision note	Date	Signature	Checked
00	Sketch Only	7/14/14	Teresa	Simon



Interface of SMA connector Per: MIL-STD-348, IEC 60169-15
 Material & Finishing:

SMA:

1. Center conductor: Brass Copper, Gold Plating
2. Insulators: PTFE
3. Spring Washer: Beryllium Copper
4. Body : Brass, Gold Plating
5. Coumping Nut: Brass, Gold
6. Crimp Ferrule: Brass. Nickel

Heat Shrink Tube: Polyolefine

Electrical Data:

1. Impedance: 50 Ohms
2. Frequency Range: DC to 18.0 GHz
3. Insulation Resistance: 1000 Megohms
4. Dielectric Withstanding Voltage: 750 V Min.
5. VSWR: ≤ 1.3
6. Insertion Loss:

ALL DIMENSIONS ARE IN MILLIMETERS AND [INCHES]

KERUI ELECTRONIC CO;LTD

Title

Super SMA male to male
 solder with maxishield 142 FJ cable

THESE DRAWING & SPEC. ARE THE PROPERTY OF KERUI ELECTRONIC CO;LTD AND SHALL NOT BE REPRODUCED, OR COPIED OR USED AS THE BASIS FOR THE MANUFACTURE OR SALE OF APPARATUS OR DEVICES WITHOUT THEIR EXPRESS WRITTEN CONSENT.

UNLESS OTHERWISE NOTED ALL SURFACES FINISHED TO 64/MAX.
 ALL TOLERANCES ARE:
 DECIMALS FRACTIONS ANGLES
 x \pm 1.0 $\pm 1/64$ x' \pm 1'
 x.x \pm 0.5 x'x' \pm 0.5°
 x.xx \pm 0.1

Drawn by Teresa	Ckd by Simon	Appd by Richard	Date 7/14/2014
Scale 1:1	Sheet 1 of 1	C171171 13 33 01	